

Neighbors In Need

Fall 2016

—Over 30 years of feeding the poor & hungry of Lawrence!

Our Board

Officers:

President Rob Thomas
Vice President Zoe Hastings
Treasurer Brenda Cronin
Secretary Lori St.Cyr

Board of Directors:

Jorge Collado
Will Green
Lajja Lantigua
Julie Little
Lorie Mendoza
Claire Ross
Emily Strong

Advisory Council:

Fernando Alonso
Priscilla Bartle
Bob Behrens
Bill Buck
Brian Carmichael
Janet Clarke
Anne Clough
Rachel Combs
Rev. Gabriella Garcia
Rejeanne Keeley
Jean Kookon
Linda Piette
Karen Purtschert
Glenn Rogers
Catherine Rosen
Maureen Smith
Ed Warnshuis

Executive Director

Linda Zimmerman

Photography

Lisa Smith
Emily Strong
Linda Zimmerman

Hunger hurts us all!

Hunger is a health issue. We all need healthy food to thrive. Without access to fresh produce and healthy sources of protein and dairy products, families are often left with having to purchase inexpensive processed food that has no nutritional value. As a nation, hunger costs us billions of dollars on health care, special education, and decreased economic productivity.



Hunger is an economic issue. Although the nation is in recovery from the great recession, life hasn't gotten much better for the poor. Despite the fact that Massachusetts is among the richest states in the nation, over 28% of the residents of Lawrence remain living in poverty. And even with the improved economy, 14.3% of Massachusetts residents report that there have been times in the last month that they did not have enough money to buy food that they or their family needed. And for those who do work, often they are trapped in a job (or two or three) with low wages that keep them in poverty. When people have more money, they have more access to better food.

Hunger is an education issue. When children are hungry they cannot concentrate, cannot focus, cannot learn! Neighbors In Need is there every week to provide food for hundreds of children.

Hunger is a social issue. Rampant hunger hurts us all. The effects of hunger and poverty are felt throughout every corner of our society. In a nation as rich as ours, we have sufficient resources and means to address these matters directly and effectively. Policies that support full employment and living wages are ways to reduce poverty and hunger. People who live in poverty and hunger do not do so out of choice. There are many issues and causes for the existence of poverty, and these may vary from region to region or even family to family. It is important for those of us with sufficient means to have compassion for them and to help out in any way we can. We will all benefit when more of us are healthy and productive!

We can all play a part in ending hunger. Thank you for all that you do for Neighbors in Need to help feed the hungry in Greater Lawrence. But there's even more you can do! You can donate a holiday meal, recruit your friends and family to also lend a hand, and support the local farmers that help feed your neighbors. Whether you help by making financial gifts, food donations, or volunteer hours, your contributions matter!

NIN works with Greater Lawrence Family Health Center to bring veggies to their patients



Since early summer, Greater Lawrence Family Health Center has been working with Greater Boston Food Bank and NIN to bring fresh fruits and vegetables to their patients who screen positive for food insecurity. NIN helps provide volunteers and picks up any left over produce. In August, the Health Center held their first Mobil Market and in October they served 365 families. These markets will continue through out the year.

Thank you to our Food Donors & Volunteer Groups!

Corporate Partners

Andover Post Office • Enterprise Bank
Internal Revenue Service Andover •
Merrimack Valley Federal Credit Union
New Balance • Pfizer • The Savings
Bank

Faith Communities

Ballard Vale United Church
Chinese Bible Church of Greater Lowell
Christ Church • Christian Fellowship
of the Merrimack Valley • First Calvary
Baptist • First Church Methuen •
First United Methodist Church • For-
est Street Church • Free Christian
Church • Havurat Shalom • South
Church in Andover • St. Augustine's
Church • St. Robert Bellarmine • St.
Lucy's Church • St. Paul Episcopal
Church • West Parish Church

Farms

Andover Community Garden
Essex County Alternative Correction
Andover High School • Imagine Farm
Farmer Dave & Farmer Dave's CSA
The Giving Garden • Ingelsby
Schoolyard Garden • Johnson's High-
land View Farm • Pleasant Valley Gar-
dens Steven Coolidge Gardens

Organizations

Andover Soccer Association • Boy Scout
Troops from North Andover, St. Rob-
erts & South Church • Cub Scout Pack
76 • Empty Nesters Andover Newcom-
ers Club • Girl Scout Troops 60496 and
78587 • Groundwork Lawrence Green
Team • Nevins Nursing Home
The Mother Connection Cares

Schools

Andover Area Homeschoolers
Andover Food Rescue
Methuen High • High Plain Elementary
Phillips Academy • Pike School
St. John's Prep
Temple Emanuel Preschool
West Elementary

Neighbors in Need benefits from Merrimack Colleges community service focus

Merrimack college students regularly serve at the Neighbors in Need office. This year in particular, we are fortunate to have Kayla Westhoff, recent graduate of University of Massachusetts Amherst. She joined us in August for a 9 month graduate school fellowship as part of her program in Community Engagement. She is with us three days a week and will be gathering data to help NIN formulate a new strategic plan, helping with volunteer coordination and staffing Soup's On. Kayla has already been spending many hours surveying clients at our food pantries and interviewing stakeholder and partner organizations. When you see her please give her a hearty welcome!

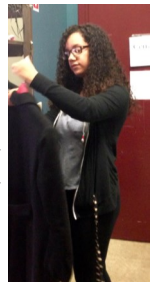


Kayla pictured here at Johnson's Highland View Farm. Photo by Paul Bilodeau, Eagle Tribune



Laurel Berryman, Merrimack volunteer

Additionally, we have six Merrimack College undergrads helping out in our clothing closet and who volunteer two hours each week from now until the semester ends in December. A big thank you to Laurel Berryman, Patrick Clark, Tristan Collins, Karen Gong, George Aoude and Gisemi Javier. Each Thanksgiving, Merrimack students, faculty and staff also contribute more than 50 meal baskets to our dinner collection. What a blessing!



Gisemi Javier, Merrimack volunteer

Neighbors in Need *Wish List*

Many of our clients are elderly or care for aging parents and need adult diapers, especially sizes M & L



Please donate new and gently used coats to Anton's Cleaners Coats for Kids. Neighbors in Need has received many bags of coats from Anton's in the last few years.

Clothing Closet Volunteer

Do you like helping people? Organizing or displaying clothing? We need you to help our Infant in Need and Clothing Bin programs, which operate Monday-Friday from 9 a.m.-12 p.m. at our office in Lawrence.

Urgently Needed Baby Items:

- Diapers size 3, 4, 5, 6
- Enfamil yellow label, powder formula



Celebrating our long time Volunteers!



Glenn Rogers (left) of Andover is one of our data entry gurus and has volunteered at the Christ United Methodist Church for more than 10 years.

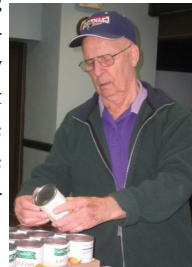
Neighbors In Need is a very small organization that has a huge impact on hunger in our community. In 1983, a group of faith leaders and their committed congregations decided that it was better to work together to feed the hungry in Lawrence than to try to tackle the problem on their own. From those roots, NIN has grown to operate 11 food distribution sites Greater Lawrence. The six member staff provides an organizational framework within which over 900 volunteers provide over 10,000 hours of volunteer support each year. Volunteers are an essential part of the Food Pantry operations. They are the mainstay of every pantry—opening the doors, preparing coffee, unloading the truck, setting up the food, checking our families into the database and helping to carry the groceries. Many of the initial volunteers have been with us for the long haul—and some of them are still vital and passionate workers. Many have been there every week for over 20 years! Some, like Christ United Methodist Church, are part of the host organization; others volunteer at multiple pantries. We are blessed with incredible volunteers and we couldn't do it without you!



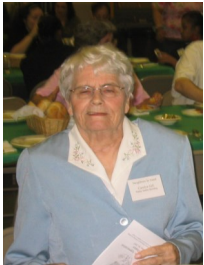
In 1995, in the wake of the Malden Mills fire, member of Christ United Methodist Church (CUMC) started the food pantry that operates at CUMC with some of the original volunteers still helping. Paul Siegal and Mirle Buchan have been there since the beginning. Paul, 93, recently retired from the pantry. Jeffrey Kress's mother, Pearl, was among the original volunteers, and he continues her tradition. Here Jeffrey, Mirle, and Paul serve food.



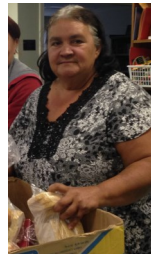
Ruth Lange (left) volunteered for many years at the United Presbyterian Pantry, then with the Christian Fellowship of the MV site. Now retired from the Pantry, she continues to be involved with NIN.



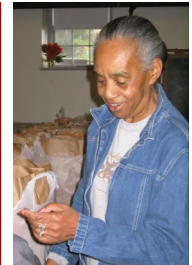
Mirle Buchan (above) volunteers every week.



Carolyn Gill (left) volunteered for many years at the Methuen Arlington Neighborhood Pantry. Carmen Rosario (right) still helps at the MAN pantry every week



Sandra Nutter (right) is our loyal volunteer at Third Baptist Church, along with Ralph Jones



Thank you to South Congregational Church!



Margaret (above) also volunteers at our Pantry on South Union Street.

Margaret Stevens has been volunteering at our Tuesday morning pantry for more than 25 years! She started helping as a committed member of the South Congregational Church in Lawrence. Last year the church has dissolved and the building was sold to *Iglesia Adventista Del Septimo Dia Jerusalem*. While we are sad to see the loss of this Lawrence institution, we are blessed that, at Margaret's urging, more than \$45,000 of the proceeds of the sale of the building was donated to Neighbors In Need. And we are so grateful to Pastor Borbon and his congregation for continuing the tradition of our Food Pantry & Holiday Meal distribution from this wonderful location!

Long term volunteers David Keene and Gayle King have been at the Pantry for over 12 years.



Regular volunteer Harold Fraser of Lawrence helps at this Pantry.

Neighbors In Need

P. O. Box 447

Lawrence, MA 01842-0947

NONPROFIT ORG.

U.S. POSTAGE PAID

LAWRENCE, MA

PERMIT NO. 12

Bringing healthy food to the poor & hungry of Greater Lawrence!



THANKSGIVING DINNERS

You can help us provide 1,200 baskets!

Donate a Meal Basket! Organize a food drive! Donate holiday foods!

BASIC DINNER

Turkey—frozen
Potatoes
Fresh Vegetables: Squash, Broccoli, Beans,
Carrots, Onions, Celery
Rice & Beans: Pink Beans, Red Beans,
Black Beans, Gandules (a favorite)
Stuffing Mix
Gravy
Cranberry Sauce
Bread or Rolls
Dessert—Pie, Cake

EXCEPT FOR TURKEY

PLEASE DO NOT INCLUDE FROZEN FOOD!!

EXTRAS

Baking Supplies
Cake or Bread Mix
Pie Ingredients—Apples, Squash, Pumpkin
Fruit Nuts
Coffee

